

Fortune 150 Grocery Firm Optimizes High-Volume Electronic Delivery of Mission-Critical Data with IpBridge/Connect

A large chain operating Marketplace superstores and supermarkets throughout 12 states and 1,070 stores with locations in the Bahamas; chooses IpBridge/Connect to send multiple files from mainframe to an NT Box. The computing system is made of mainframe (VSE & MVS), Mini and Micro computers. Some NT boxes serve as a means to push and pull data to the outside world by using a revolving firewall & proxy servers.

CHALLENGE

A large chain operating Marketplace superstores and supermarkets throughout 12 states and 1,070 stores with locations in the Bahamas; chooses IpBridge/Connect to send multiple files from mainframe to an NT Box. The computing system is made of mainframe (VSE & MVS), Mini and Micro computers. Some NT boxes serve as a means to push and pull data to the outside world by using a revolving firewall & proxy servers.

"What attracted me to IpBridge/Connect was its capability to receive multiple files into a single NT box using HTTP. Since we have a 'Clearing NT Box' that distributes files to other NT boxes, multi-threaded capability at a single box was very important,"

says the user.

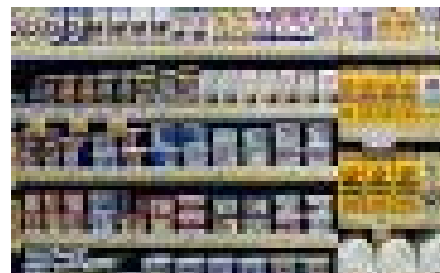
SOLUTION

The project was installed in production using IpBridge/Connect as its file transfer backbone. We are using it in a file transfer service that is resulting in 7 +MB of data transfer in 25s of lapsed time and less than 3 seconds of total CPU time. With IpBridge/Connect implemented they are realizing a compression rate of 87-90% on a 500 byte record. Previously they were not getting compression and realized half as much throughput given the same lapsed time.

Multi-threaded capabilities for the NT Side is also an option they are using, where as the previous software did not have this capability.

BENEFITS

In addition the success of using IpBridge/Connect to implement the project; the customers best impression received from Data 21 has been said to be the technical service he received. Within days of both sides understanding what was expected of the software to accomplish out of development and into the real world; they were able to receive new IpBridge/Connect and ZIP/390 upgrade packages. The mutual understanding of the project allowed them to key in empty files to be sent out among files that had valid data. In addition to the request for a new capability to run a command on the NT side from the mainframe after the file transfers were complete. With IpBridge, this gives the ability to transfer and run an executable.



In closing, he adds; "Now that we have put IpBridge/Connect into production I would like to mention my total comfort with Data 21's sales, service and the product itself. After the production becomes a house hold name on the MVS side my plans are to receive and install a test version on our VSE side where we have a need for better technology as well."